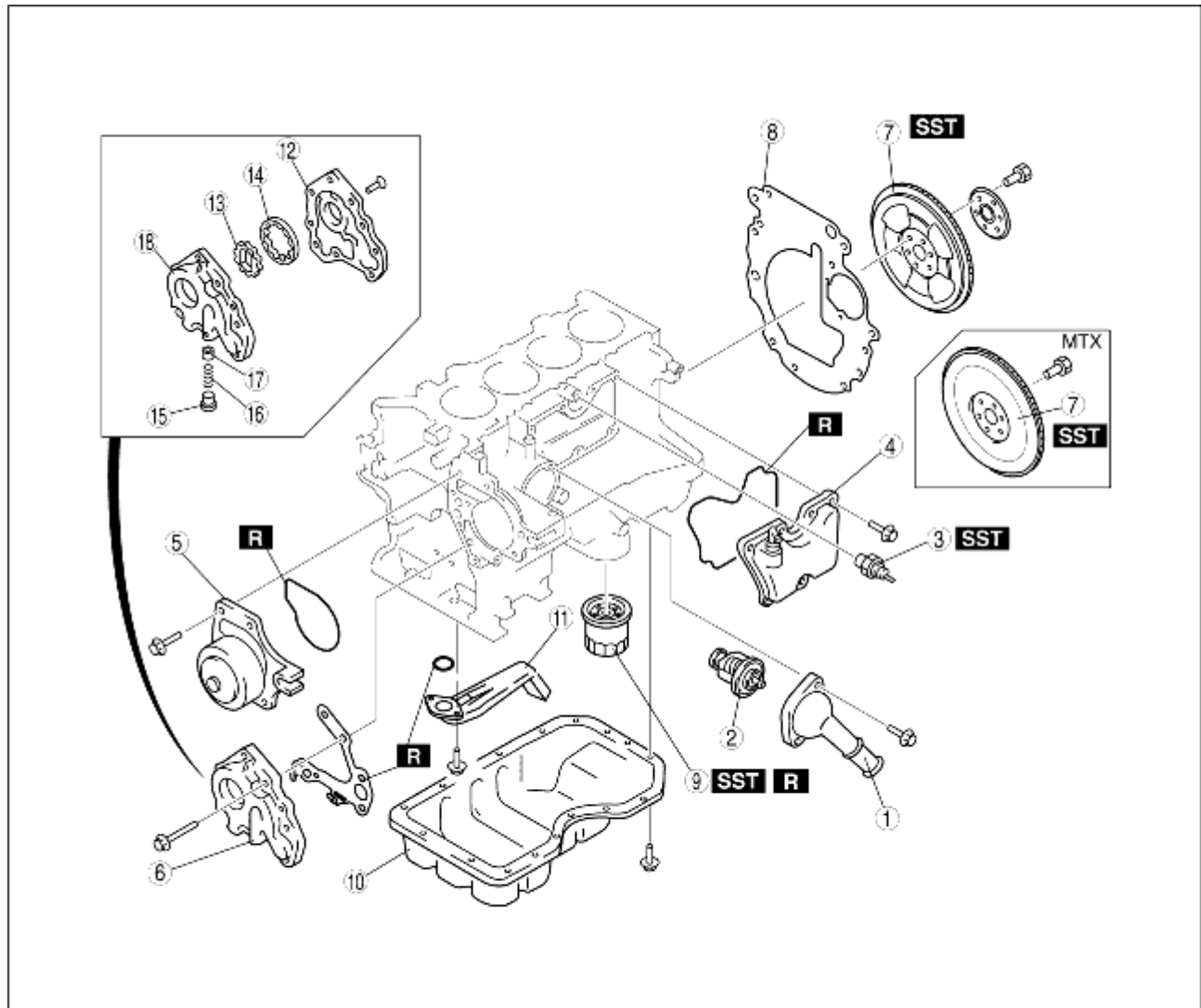


CYLINDER BLOCK (I) DISASSEMBLY

B3E011010300E01

1. Disassemble in the order indicated in the table.



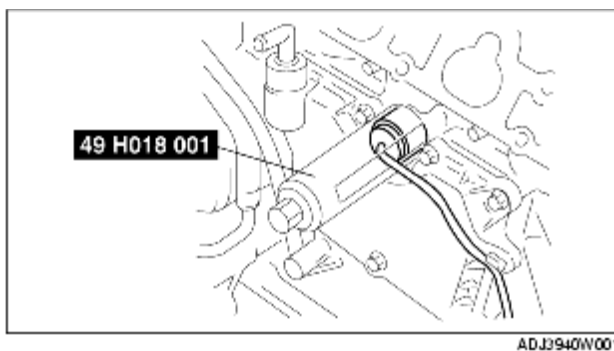
B3E0110E013

1	Thermostat cover
2	Thermostat
3	Knock sensor (See Knock Sensor Disassembly Note)
4	Oil separator
5	Water pump
6	Oil pump
7	Drive plate (ATX), flywheel (MTX) (See Drive Plate (ATX), Flywheel (MTX) Disassembly Note)
8	End plate
9	Oil filter (See Oil Filter Disassembly Note)

10	Oil pan (See Oil Pan Disassembly Note)
11	Oil strainer
12	Oil pump cover
13	Inner rotor
14	Outer rotor
15	Plunger plug
16	Plunger spring
17	Control plunger
18	Oil pump body

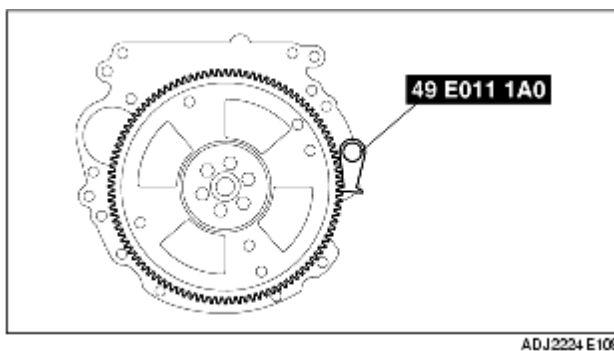
Knock Sensor Disassembly Note

1. Remove the knock sensor using the **SST**.



Drive Plate (ATX), Flywheel (MTX) Disassembly Note

1. Lock the drive plate (ATX) or flywheel (MTX) against rotation using the **SST**.



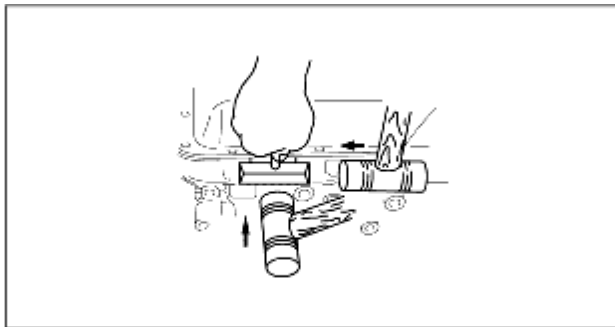
2. Remove the drive plate or flywheel installation bolts.

Oil Filter Disassembly Note

1. Remove the oil filter using the **SST**.

Oil Pan Disassembly Note

1. Remove the oil pan using a separator tool.



B3 E0110 E009